



# LITTLE WONDER®

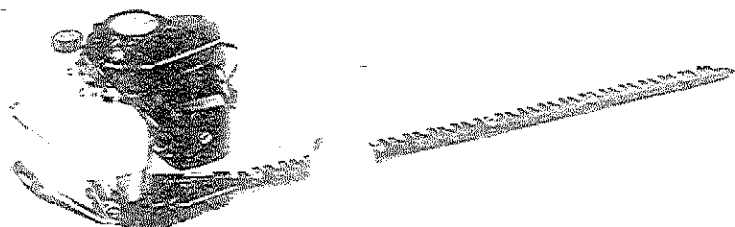
DIVISION OF SCHILLER-PFEIFFER, INCORPORATED

P.O. BOX 38, 1028 STREET ROAD  
AREA CODE 215-357-5110

SOUTHAMPTON, PA 18966 U.S.A.  
FAX NO 215-357-8045



## INSTRUCTIONS AND REPAIR PARTS FOR THE LITTLE WONDER CAT. No. 1222E - (16") AND CAT. No. 2222E - (30") GAS POWERED HEDGE TRIMMERS



### WARNING:

**TO GUARD AGAINST INJURY, BASIC SAFETY PRECAUTIONS SHOULD BE OBSERVED, INCLUDING THE FOLLOWING:**

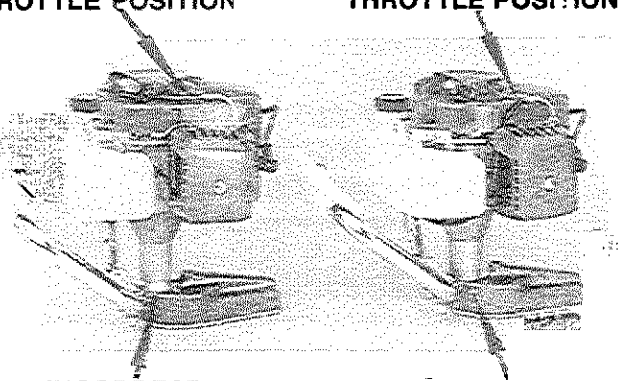
#### ASSEMBLY INSTRUCTIONS

Remove handle and hedge trimmer from carton. On 16" and on 30" models, screw handle into handle adapter located on frame bar in threaded hole provided. Handle should be sufficiently tightened to insure that at least three or four clicks are felt on locking notches.

Install gasoline engine to hedge trimmer by first aligning the hex head drive on the hedge trimmer with the hex socket in the gasoline engine and place engine over one inch (1") diameter stem of hedge trimmer and secure with 5/16" hex socket wrench or flat screw driver.

**INCORRECT  
THROTTLE POSITION**

**CORRECT  
THROTTLE POSITION**



**INCORRECT  
WITH GAP**

Figure #1

**CORRECT  
WITHOUT GAP**

gap) before securing with 5/16" socket (see figure #1). Also be sure throttle cable is as shown in illustration (see figure #1). Remove the two 1/4"-20 nuts preassembled to handle and place handle on hedge trimmer. Insert the two 1/4"-20 handle bolts into 1/4 inch holes and half round slot provided at rear of hedge trimmer housing and secure the handle with the 1/4"-20 nuts and hex head bolts provided. For engine operating instructions, read engine manual carefully. Make certain that you use the proper gasoline and air-cooled engine oil mix. **DO NOT USE PLAIN GASOLINE WITH THIS TWO-CYCLE ENGINE.**

#### CARE AND SAFETY

1. READ AND FOLLOW ALL INSTRUCTIONS.
2. DRESS PROPERLY — Do not wear loose clothing or jewelry. They can be caught in moving parts. Use of sturdy gloves, non-skid foot-wear and safety glasses is recommended.
3. STAY ALERT — Watch what you are doing and use common sense. Do not operate trimmer when fatigued.
4. DANGER — CUT HAZARD — KEEP HANDS AWAY FROM BLADES — Keep both hands on handles when power is on. Do not attempt to remove cut material nor hold material to be cut when blades are moving. Make sure engine is shut off when clearing jammed material from blades. Do not grasp the exposed cutting blades on cutting edges of trimmer. Do not over-ride safety features in any way.

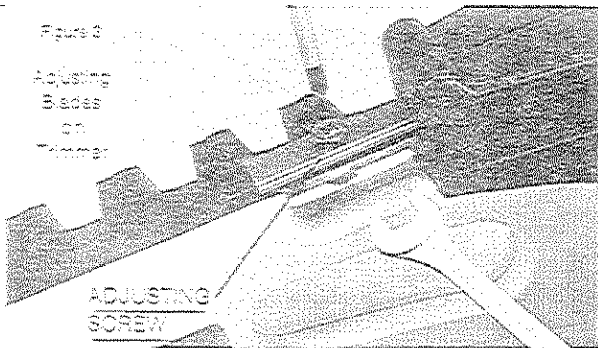
Make certain engine is mounted correctly (without

*Important (Turn to Pages 2 & 4)*

## ADJUSTMENT FOR HEDGE TRIMMER BLADES

The care and adjustment of the blades is most important to the efficient operation of the trimmer and especially to the long life of the engine.

- 1 Place trimmer in vise as shown in figure #3 clamping on frame bar with blades pointing away from you.



- 2 Using a 7/16" wrench, loosen all blade locknuts and unscrew the large head screws by two turns.
- 3 Starting with the screw nearest the gear housing, tighten the screw until the blade guard can just be moved with finger pressure and a 0.0015" (1½ thou.) feeler blade just slips under the blade guard. Tighten the locknuts while holding the screw stationary in its correctly adjusted position.
- 4 Repeat step 3 on the screws in turn until all are correctly adjusted.

**NOTE** — Correct blade adjustment can only be achieved on clean, oiled blades.

## 5 YEAR LIMITED SERVICE & WARRANTY POLICY GAS HEDGE TRIMMER

All "Little Wonder" products are guaranteed against defects in material and workmanship for a period of FIVE YEARS when used for RESIDENTIAL SERVICE, or COMMERCIAL SERVICE. Any "Little Wonder" Gas Hedge Trimmer or part found to be defective within the warranty period is to be returned to our factory at Southampton, Pennsylvania.

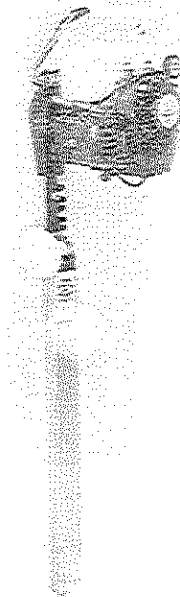
Engines for gas powered products are warranted separately by the engine manufacturer. Therefore, there are no warranties made, expressed or implied, for engines for gas powered products by "Little Wonder".

Transportation charges on parts and units submitted for replacement under this warranty must be borne by purchaser.

THIS WARRANTY shall not be effective if the product has been the subject of misuse, negligence or accident or if the product has been repaired or altered outside of our Southampton factory in any respect which affects its condition or operation.

"Little Wonder" shall not be liable for any special indirect or consequential damages arising from defective equipment. Any implied warranty, including merchantability of fitness for a particular purpose, shall not extend beyond the written warranty period.

THIS WARRANTY shall be effective only providing enclosed card is properly filled out and returned to "Little Wonder, Div. of Schiller-Pfeiffer, Inc." at time of purchase.



**NEW LITTLE WONDER  
STORAGE SHEATH**

**Cat. No. 1100DE**

(Figure 4)

16-52	16" Outside Blade complete with connecting rod and drive pin	1	5
303A	16" Inside Blade complete with drive pin	1	5
16-54A	16" Frame Bar	1	1
16-54B	Large Head Screw 1/4-28 x 11/16" LG.	3	3
16-93	Blade Guard	3	5
30-1	30" Outside Blade complete with connecting rod and drive pin	1	1
7 30-2	30" Inside Blade complete with drive pin	1	1
8 30-3	30" Frame Bar	6	6
9 16-55	Flat Head Machine Screw 1/4-28 x 1/2" LG	1	1
10 16-54B	Flange Nut 1/4-28	1	1
11 325	Handle Adapter	1	1
12 D16-73	Side Handle	2	2
13 16-61	Cover Plate Screw #6-32 x 5/16 LG (set of 6)	1	1
14 316	Cover Plate	1	1
15 319	Gasket	1	1
16 372	Eccentric Gear	1	1
17 16-64	Connecting Link	2	2
18 16-65	Connecting Rod Spacer	1	1
19 373	Bushing Lower	1	1
20 16-80	Cover Plate Pin	1	1
21 16-61	Eccentric Shaft	1	1
22 D16-56F	Wear Strip	1	1
23 314	Felt	1	1
24 370	Gear Housing	1	1
25 374	Bushing-Upper	1	1
26 375	Washer 1/2" I.D.	1	1
27 371	Pinion	1	1
28 376	Handle	1	1
29 395	Nut Acorn 1/4-20	2	2
30 377	Handle Clamp	1	1
31 378	Hex Head Cap Screw 1/4-20 x 1 1/2" LG.	2	2
32 383	Grip-Thru	1	1
33 379	Cable Retainer	2	2
34 413	Retaining Ring	1	1
35 382	Throttle Lever	1	1
36 178002-11520	Throttle Cable	1	1
37 360E4B	SV-4B Engine	1	1
38 376-1	Cap Plug	1	1

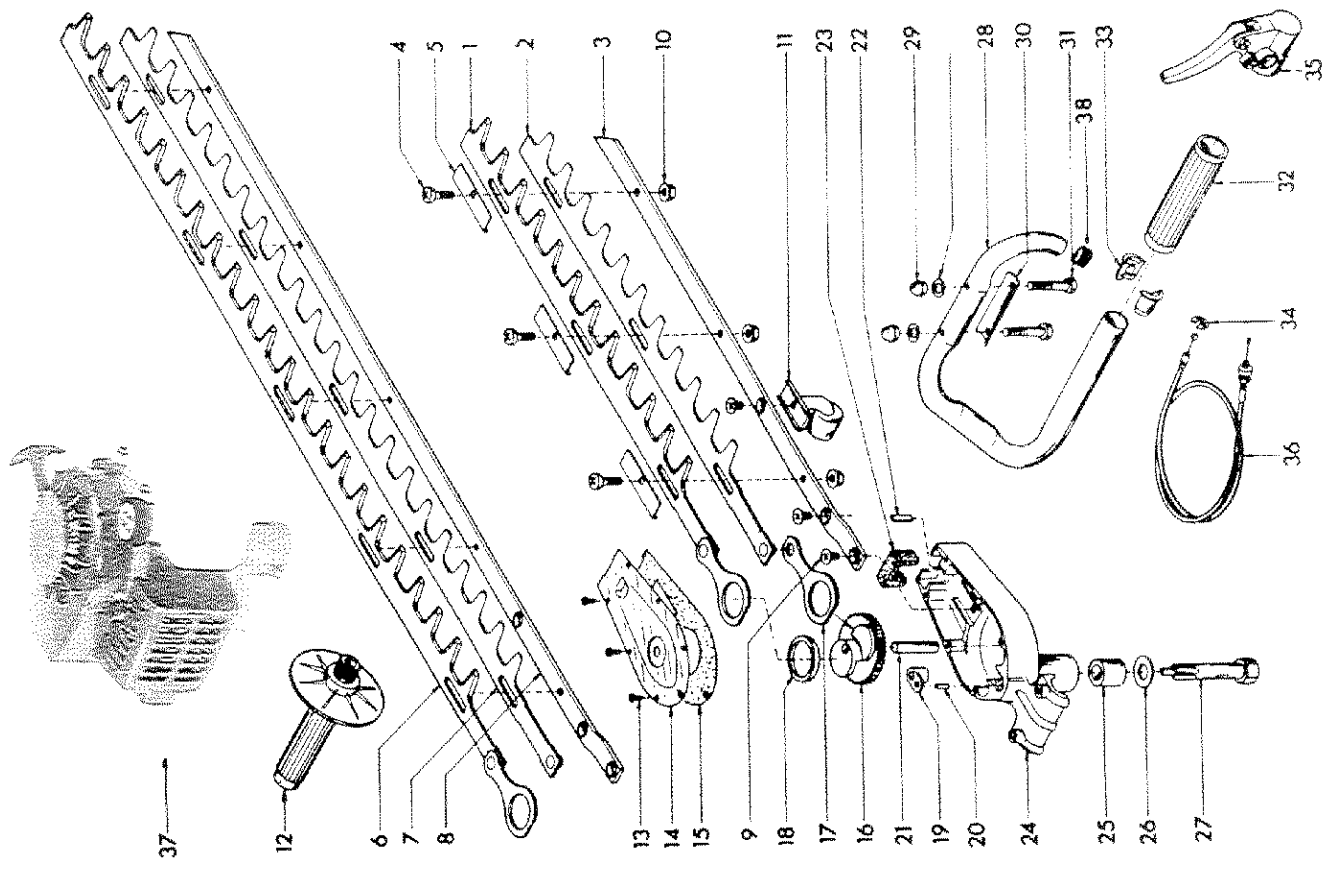


Figure #2

**CAUTION — BLADES WILL COAST AFTER UNIT HAS BEEN TURNED OFF OR AFTER THROTTLE HAS BEEN RELEASED.**

5. KEEP CHILDREN AND INCAPABLE PERSONS AWAY — Do not permit children to contact trimmer. Keep children a safe distance from work area. Never allow a person mentally ill, under influence of alcoholic drinks or drugs, or too young in age, to operate the hedge trimmer.
6. USE TRIMMER PROPERLY — Use only for trimming the type of shrub, growth, etc. described in the operating instructions. Do not abuse trimmer.
7. DON'T OVERREACH OR STAND ON UNSTABLE SUPPORT — Keep good footing and balance at all times.
8. WARNING — Do not fuel, refuel or check fuel system when smoking or near an open fire. Do not run the engine when fueling or refueling. Stop engine when transporting from one place to another. Do not leave engine running while hedge trimmer is unattended.
9. CAUTION — Do not start or run engine indoors as poisonous carbonmonoxides are emitted.
10. MULTIPLE OPERATORS — Keep a safe distance between two or more operators when working together simultaneously.
11. Check spark plug from time to time. When checking, keep plug a safe distance from cylinder to avoid burning of evaporated fuel from cylinder.
12. MAINTAIN & EXAMINE TRIMMER WITH CARE — Follow maintenance instructions given in manual. Do not use the hedge trimmer if any component parts have become damaged or are missing.
13. STORE TRIMMER INDOORS — When not in use, store trimmer indoors in a sheltered area (a dry place) where not accessible to children. As illustrated in Fig. #4, Little Wonder Storage Sheath (Cat. No. 1100DE) filled with a light #10 oil is recommended to prevent blade separation which will affect cutting ability. The hedge trimmer, as well as fuel, should not be stored in a house.
14. DO NOT ATTEMPT TO REPAIR TRIMMER — Have repairs made by qualified dealer or repairman. See that only original equipment Little Wonder parts are used.

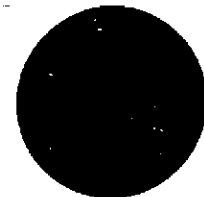
15. BEFORE EACH USE INSPECT TO BE SURE HANDLES, GUARDS, AND FASTENERS ARE SECURE AND IN PLACE:

## LUBRICATION AND MAINTENANCE

1. A few drops of light #10 oil should be placed at each adjusting screw approximately every four hours of normal operation.
2. To obtain trouble free trimming, it is necessary to remove gum that collects on the blades. This is best done by keeping trimmer in storage sheath filled with a light #10 oil, after each cutting. Blades must be clean before they can be adjusted.
3. When blades are replaced, or any other time that the bottom cover plate is removed, grease level should be checked for proper amount (approximately  $\frac{3}{4}$  full in area of gears) and a new gasket should be used to insure proper seating of cover plate. Use only Lubrico M3-3K-9K (P/N 16-78A) grease in the gear housing. (See Accessory Items.)

## INSTRUCTIONS FOR SAFE OPERATION

1. READ CARE AND SAFETY INSTRUCTIONS CAREFULLY.
2. For fuel mixture and engine operation, read engine manual carefully. BEFORE STARTING - BE SURE STOP SWITCH IS IN RUN POSITION.
3. Hold trimmer firmly, squeeze throttle to accelerate engine, tilt trimmer so cutting tooth is angled slightly toward the hedge or shrub and proceed to cut. The unit is designed to cut any type of hedge or shrub; however,  
**THICKNESS OF CUT SHOULD NOT EXCEED 1" INCH IN DIAMETER.**



**CAUTION**

**BE CAREFUL OF HIDDEN METALLIC OBJECTS** in the hedge or shrubbery which may damage trimmer.