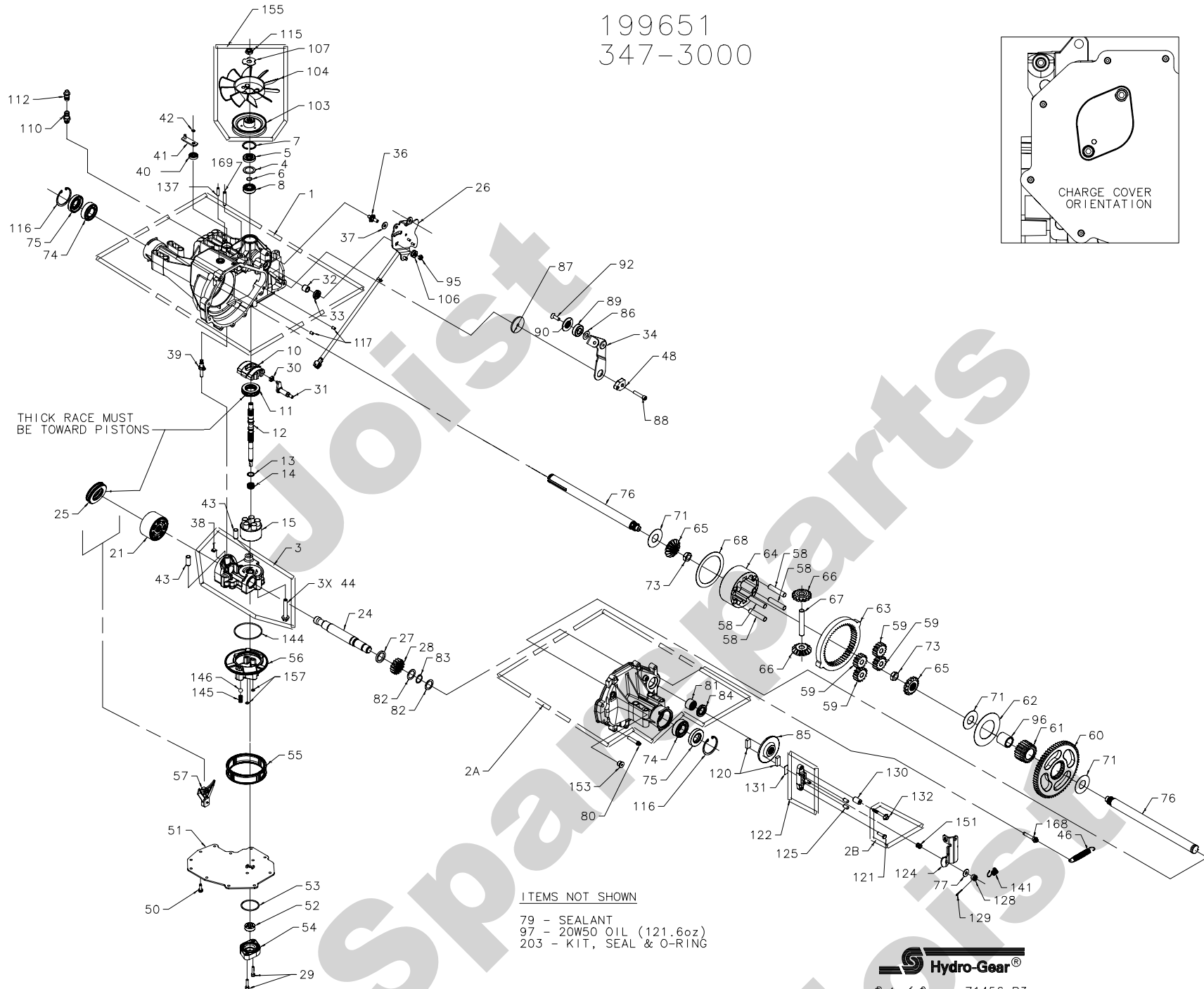
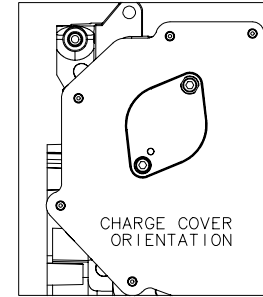


199651
347-3000



THICK RACE MUST
BE TOWARD PISTONS

- ITEMS NOT SHOWN
- 79 - SEALANT
 - 97 - 20W50 OIL (121.6oz)
 - 203 - KIT, SEAL & O-RING

199651
347-3000

ITEM #	PART #	QTY	DESCRIPTION		
1	70297	1	ASSEMBLY, MAIN HOUSING		
		1	HOUSING, MAIN		
		1	SEAL, LIP 12 X 25 X 7		
		1	BEARING, FLANGE 1.0 X 1.376 X .99		
		1	BEARING, TRUNNION		
		2	BEARING, CRADLE		
		2A	71120	1	ASSEMBLY, RIGHT HAND HOUSING
				1	HOUSING, RIGHT HAND
				1	BEARING, FLANGE 1.0 X 1.376 X .99
				1	BEARING, NEEDLE .875 X 1.125 X .75
2B	71139	1	SEAL, LIP .875 X 1.375 X .250		
		1	KIT, BRAKE BOLT		
3	70687	1	BOLT, HEX HD 1/4-20 X 1 W/PATCH		
		1	BOLT, HEX HD 1/4-20 X 2 W/PATCH		
		1	ASSEMBLY, CENTER SECTION		
		1	CENTER SECTION		
		1	BEARING, JOURNAL .50 X .59 X .50		
		1	BEARING .90 X 1.0 X .75		
		1	PLATE, BYPASS		
		1	CHECK PLUG ASSEMBLY, .044		
		3	CHECK PLUG ASSEMBLY, .027		
		1	SCREW, HEX FLANGE 3/8-24 X 2.5		
4	2003018	1	SPACER, .98 X 1.37 X .04		
5	9008000-0128	1	SEAL, LIP 15 X 35 X 7		
6	2003016	1	RING, RETAINING		
7	2003052	1	RING, RETAINING		
8	2003043	1	BEARING, BALL .59 X 1.38 X .43		
10	2003087	1	SWASHPLATE, VARIABLE		
11	50551	1	BEARING, THRUST 30 X 52 X 13		
12	50795	1	SHAFT, INPUT (STD CHARGE)		
13	2003017	1	WASHER, THRUST .59 X .79 X .04		
14	2003014	1	SPRING, BLOCK		
15	70331	1	ASSEMBLY, BLOCK		
		1	BLOCK, CYLINDER		
		5	PISTON		
		5	SPRING, COMPRESSION		
21	70082	5	WASHER, THRUST		
		1	ASSEMBLY, BLOCK		
		1	BLOCK, CYLINDER		
		7	PISTON		
		7	SPRING, COMPRESSION		
		7	WASHER, THRUST		
		24	50662	1	SHAFT, MOTOR
		25	50552	1	BEARING, THRUST 42 X 68 X 16
		26	71457	1	ASSEMBLY, GT RCS
				1	BULLETIN, CONTROL ARM
27	50774	1	SPACER, 1.03 X 1.38 X .184		
28	50661	1	GEAR, 16T PINION		
29	50975	2	SCREW, CAP M6 X 1 X 25		
30	2000015	1	GUIDE, SLOT		
31	50807	1	ARM, TRUNNION TAPERED SQUARE		
32	2003009	1	BEARING, TRUNNION		
33	9008000-0126	1	SEAL, LIP 12 X 25 X 7		
34	51127	1	ARM, RETURN		
36	50426	1	STUD, SHORT 5/16-24		
37	50281	1	PUCK, .798 X .319 X .097		
38	70680	1	KIT, BYPASS PLATE		
39	2003555	1	ACTUATOR, BYPASS		
40	45074	1	SEAL, LIP 10 X 25 X 7		
41	50270	1	ARM, BYPASS		
42	44870	1	RING, RETAINING		
43	50002	2	PIN, HOLLOW .39 X .50 X 1.12		

ITEM #	PART #	QTY	DESCRIPTION
46	52386	1	SPRING, 4IN RETURN (LIGHT)
48	51097	1	PUCK, ADJUSTING
50	50752	11	SCREW, HEX FLANGE 1/4-20 X .75
51	50972	1	COVER, LOWER W/ 2 KIDNEYS
52	50273	1	GEROTOR
53	9004101-1340	1	O-RING 1.862 X 2.068
54	52610	1	HOUSING, CHARGE PUMP
55	51315	1	FILTER, STD CHARGE
56	51156	1	MANIFOLD, CHARGE
57	50796	1	RETAINER, MOTOR BEARING
58	50776	4	PIN, CARRIER
59	50763	4	GEAR, 15T PLANET
60	50646	1	GEAR, 67T SPUR
61	50645	1	GEAR, 21T SUN
62	50769	1	WASHER, THRUST 2.32 X 4.10 X .05
63	50764	1	GEAR, 51T RING
64	50765	1	CARRIER, PLANETARY
65	50647	2	GEAR, 14T MITER (SPLINED)
66	50648	2	GEAR, 14T MITER (UNSPLINED)
67	50766	1	SHAFT, DIFFERENTIAL
68	50767	1	WASHER, THRUST 3.46 X 4.39 X .05
71	50788	3	WASHER, 1.0 X 2.25 X .04
73	50791	2	NUT, HEX 5/8-18 W/ PATCH
74	50771	2	BEARING, BALL 25.4 X 52 X 15
75	50772	2	SEAL, LIP 1.0 X 2.049 X .375
76	50663	2	SHAFT, AXLE 1.0 X 13.80 (KEY)
77	44130	1	WASHER, .34 X .88 X .06
79	50928	10.1oz	SEALANT
80	50868	8	SCREW, TORX HD 5/16-18 X 1.5
81	44752	1	BEARING, NEEDLE .875 X 1.125 X .75
82	50777	2	WASHER, FLAT .88 X 1.25 X .04
83	50775	1	RING, RETAINING
84	50773	1	SEAL, LIP .875 X 1.375 X .250
85	50779	1	DISK, BRAKE
86	50132	1	WASHER .51 X 1.0 X .03
87	50836	1	SPACER, .32 X 1.96 X .15
88	50837	1	SCREW, SOCKET HD CAP 5/16-24 X 1.5
89	44147	1	BEARING, BALL .62 X 1.38 X .44
90	51200	1	SPACER, LOCATING
92	50870	1	SCREW, COUNTERSUNK 5/16-18 X 1.0
95	50108	1	NUT, HEX LOCK 5/16-24 W/NYLON INSERT
96	50866	1	BUSHING, SLEEVE 1.0 X 1.3 X 1.34
97		121.6oz	OIL 20W50
103	51231	1	PULLEY, 3.86 IN
104	51230	1	FAN, 7.0 (10 BLADE)
106	51604	1	SPACER, TRUNNION
107	51523	1	WASHER, OD SLOTTED .53 X 1.63 X .06
110	70110	1	ASSEMBLY, FITTING O-RING
112	70109	1	ASSEMBLY, CAP-VENT
115	51244	1	NUT, HEX LOCK 1/2-20 W/NYLON INSERT
116	50859	2	RING, RETAINING
117	9004800-2506	2	PIN, STANDARD HEADLESS
120	44132	2	PUCK, BRAKE
121	44433	1	BOLT, HEX HD 1/4-20 X 1 W/PATCH
122	70633	1	ASSEMBLY, BRAKE YOKE
124	50911	1	ARM, BRAKE
125	44127	2	PIN, BRAKE ACTUATOR

ITEM #	PART #	QTY	DESCRIPTION
128	44142	1	NUT, CASTLE 5/16-24
129	44101	1	PIN, COTTER 3/32 X 3/4
130	23711	1	SPACER, .26 X .57 X .87
131	44134	1	PLATE, PUCK
132	51146	1	BOLT, HEX HD 1/4-20 X 2 W/PATCH
137	50882	1	PIN, SPRING .26 X 1
141	50884	1	SPRING, BRAKE ARM BIAS
144	50974	1	O-RING 2.987 X 3.09
145	51157	1	SPRING, RELIEF
146	9001214-4400	1	BALL, 7/16 IN
151	50919	1	SPRING, COMP. BRAKE ANTI-Drag
153	9005110-5600	1	PLUG, 9/16-18 (METAL)
155	70460	1	KIT, FAN/PULLEY
		1	NUT, HEX LOCK 1/2-20 W/NYLON INSERT
		1	WASHER, OD SLOTTED .53 X 1.63 X .06
		1	FAN, 7.0 IN (10 BLADE)
		1	PULLEY, 3.86 IN
		2	O-RING .239 X .379
157	50977	1	SCREW, TORX HD SHOULDERED 5/16-18 X 1.81
168	51151	1	PIN, SPRING .32 X 1.75
169	51463	1	KIT, SEAL & O-RING
203	70492	1	SEAL, LIP 15 X 35 X 7
		1	SEAL, LIP 12 X 25 X 7
		1	SEAL, LIP 10 X 25 X 7
		1	O-RING, 1.862 X 2.068
		2	SEAL, LIP 1.0 X 2.049 X .375
		1	SEAL, LIP .875 X 1.375 X .250
		1	KIT, MANIFOLD O-RING
		2	O-RING, .239 X .379