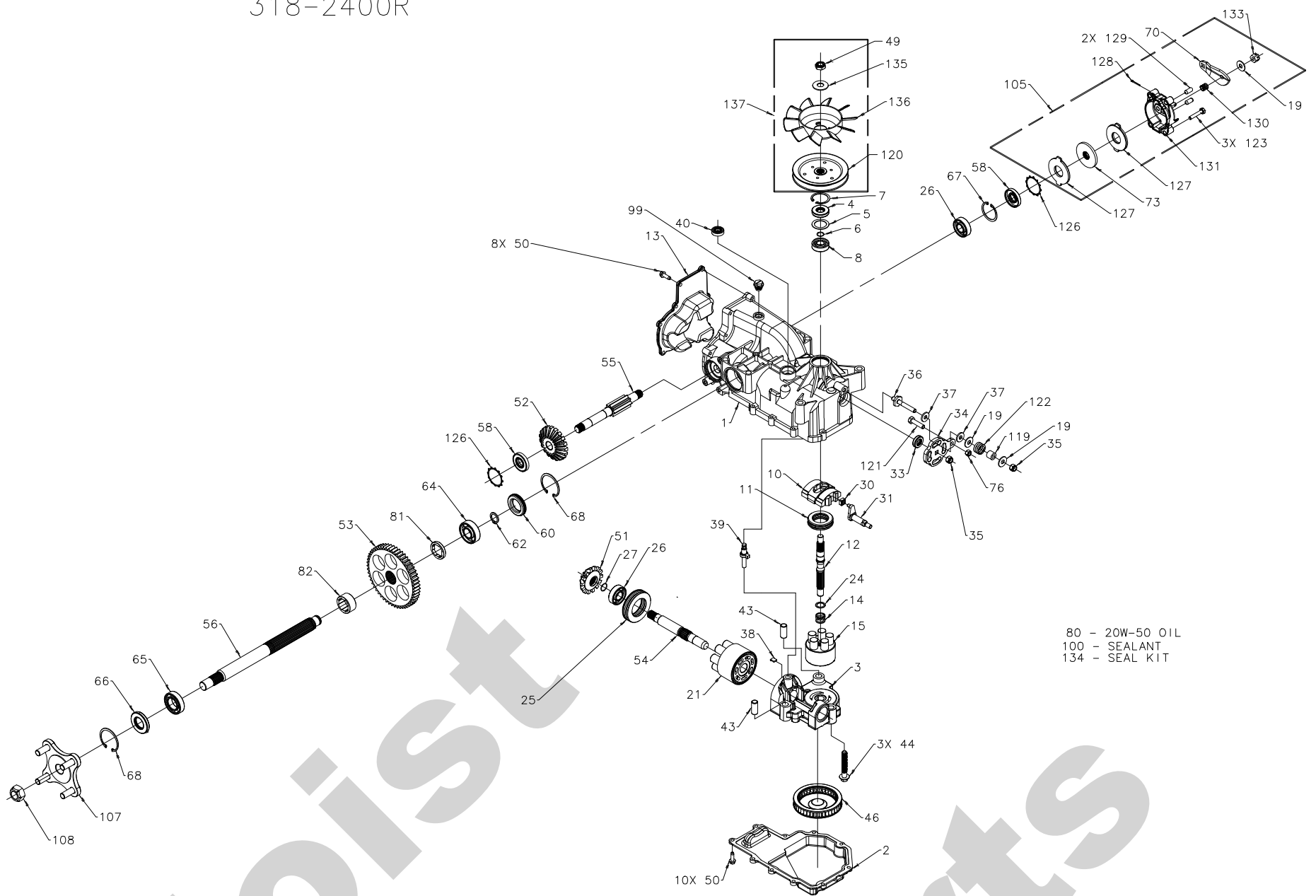


13055  
318-2400R



Hydro-Gear  
P.1 of 2. 70555R-S2

13055  
318-2400R

ITEM #	PART #	QTY	DESCRIPTION	ITEM #	PART #	QTY	DESCRIPTION
1	70556	1	KIT, HOUSING-MAIN	64	50743	1	BEARING-BALL 20X47X14(6204)
		1	HOUSING, MAIN	65	50740	1	BEARING-BALL 25X47X12(6005)
		2	CRADLE BEARING	66	50751	1	SEAL
		1	LIP SEAL	67	50329	1	RETAINING RING
2	50890RM	1	TRUNNION BUSHING	68	50760	2	RETAINING RING-AXLE
3	70552	1	LOWER HOUSING	70	51349	1	ARM, BRAKE
		1	CENTER SECTION ASSEMBLY KIT	73	44855	1	ROTOR, BRAKE
		1	BYPASS PLATE	76	43083	1	HEX NUT 5/16-18
		2	CHECK PLUG ASSEMBLY	80		77oz	20W-50 OIL
		1	CENTER SECTION	81	50942-2	1	AXLE BUSHING
		1	BUSHING	82	50942-1	1	AXLE BUSHING
		3	SCREW	99	9005200-5600	1	PLUG-PLASTIC
4	9008000-0128	1	LIP SEAL	100	50928	1	SEALANT
5	2003018	1	SPACER	105	70561	1	KIT, BRAKE
6	2003016	1	WIRE RETAINING RING			1	WASHER
7	2003052	1	RETAINING RING			1	ARM, BRAKE
8	2003043	1	BALL BEARING			1	ROTOR, BRAKE
10	2003087	1	VARIABLE SWASHPLATE	3		3	SCREW, 1/4-28 X 1.38 W/PATCH
11	50551	1	THRUST BEARING 30 X 52 X 13	2		2	STATOR, BRAKE FRICTION
12	50005	1	INPUT SHAFT	1		1	COTTER PIN 3/32 X 3/4
13	50891RM	1	COVER-BACK	2		2	BRAKE ACTUATING PIN
14	2003014	1	SPRING, BLOCK	1		1	COMPRESSION SPRING ANTI DRAG
15	70331	1	10cc CYLINDER BLOCK ASS'Y	1		1	KIT, YOKE-BRAKE
		1	10cc CYLINDER BLOCK	1		1	SLOTTED HEX NUT 5/16-24
		5	10cc PISTON SPRING	107	70314	1	HUB ASSEMBLY
		5	PISTON SEAT WASHER			1	HUB
		5	10cc PISTON			4	LUG BOLT
19	44130	3	WASHER	108	50863	1	NUT, HEX 3/4-16
21	70082	1	21cc CYLINDER BLOCK ASS'Y	119	50278	1	SPACER
		1	21cc CYLINDER BLOCK	120	51182	1	PULLEY, 4.5
		7	21cc PISTON SPRING	121	51047	1	BOLT 5/16-18X1-1/4
		7	PISTON SEAT WASHER	122	50277	1	HELICAL COMP. SPRING
		7	21cc PISTON	123	51341	3	SCREW, 1/4-28 X 1.38 W/PATCH
24	2003017	1	WASHER, BLOCK THRUST	126	51316	2	RING, RETAINING
25	50552	1	THRUST BEARING 42 X 68 X 16	127	51340	2	STATOR, BRAKE FRICTION
26	50315	2	BALL BEARING	128	44101	1	COTTER PIN 3/32 X 3/4
27	2000022	1	WIRE RETAINING RING	129	44127	2	BRAKE ACTUATING PIN
30	2000015	1	SLOT GUIDE	130	50919	1	COMPRESSION SPRING BRAKE ANTI DRAG
31	50807	1	TRUNNION ARM	131	70560	1	KIT, YOKE-BRAKE
33	9008000-0126	1	LIP SEAL			1	SQ HD BOLT 5/16-24 RIBBED
34	50749	1	CONTROL ARM			1	YOKE, BRAKE
35	50317	2	NUT	133	44142	1	SLOTTED HEX NUT 5/16-24
36	50284	1	STUD - LONG 5/16-24	134	70553	1	KIT, SEAL
37	50281	2	FRICTION PUCK			1	SEAL, LIP 15 X 35 X 7
38	2003554	1	BYPASS PLATE			1	RING, RETAINING
39	2003555	1	BYPASS ACTUATOR			1	SEAL, LIP 12 X 25 X 7
40	45074	1	LIP SEAL			1	SEAL, LIP 10 X 25 X 7
43	50002	2	PIN			1	RING, RETAINING
44	50016	3	SCREW			2	SEAL, LIP 17 X 40 X 7
46	50990	1	FILTER	135	51234	1	WASHER, .531 X 1.250 X .092 (BELLEVILLE)
49	51244	1	HEX LOCK NUT 1/2-20 (NYLON INSERT)	136	51362	1	FAN, 6", 10 BLADE
50	50752	18	SCREW, 1/4-20 X .75 LONG	137	70583	1	KIT, FAN-PULLEY
51	50744	1	14T BEVEL GEAR			1	WASHER, .531 X 1.250 X .092 (BELLEVILLE)
52	50745	1	19T BEVEL GEAR			1	FAN, 6", 10 BLADE
53	50746	1	53T SPUR GEAR			1	HEX LOCK NUT 1/2-20 (NYLON INSERT)
54	50757	1	MOTOR SHAFT			1	PULLEY, 4.5
55	51335	1	BRAKE SHAFT				
56	50748	1	AXLE SHAFT				
58	51161	2	SEAL, LIP 17 X 40 X 7				
60	50995	1	SEAL PLUG - SIDE				
62	50759	1	RETAINING RING - AXLE				

Hydro-Gear  
P.2 of 2. 70555R-S2