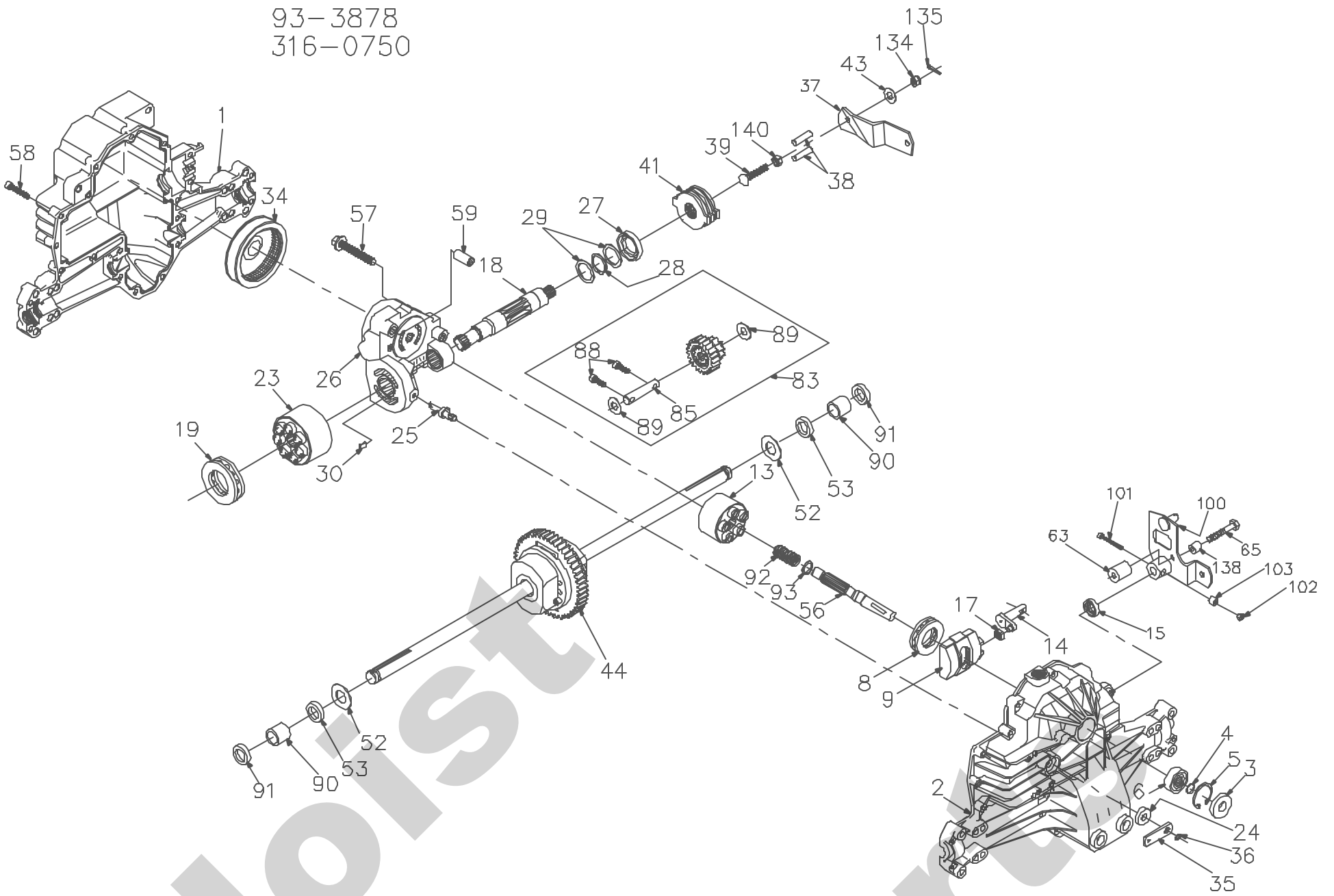


93-3878  
316-0750



**Hydro-Gear**  
P.1 of 2. 70196-S13

93-3878  
316-0750

ITEM NO	HYDRO-GEAR PART NO	QTY	DESCRIPTION	ITEM NO	HYDRO-GEAR PART NO	QTY	DESCRIPTION
1	50074RM	1	HOUSING, LOWER	43	44130	1	WASHER-7/16 X 7/8 X .060
2	70255	1	ASSEMBLY, UPPER HOUSING	44	70130	1	DIFFERENTIAL ASSEMBLY
		1	HOUSING, UPPER			1	GEAR-DIFF. 50T
3	9008000-0128	1	BEARING-TRUNNION JOURNAL			2	DIFF COVER
4	2003016	1	SEAL-LIP			2	GEAR-BEVEL 15T
5	2003052	1	RING-WIRE RETAINING			2	GEAR-PLANET 15T
6	2003043	1	RING-RETAINING			2	JAM NUT
8	50551	1	BEARING-SHAFT BALL			4	BOLT- 1/4-20 X 1.38
9	2003087	1	BEARING-THRUST 30X52X13			1	AXLE SHAFT, RH
13	70331	1	SWASHPLATE-VARIABLE			1	AXLE SHAFT, LH
		1	BLOCK-CYLINDER ASS'Y.			2	BEARING, BLOCK
		1	BLOCK-CYLINDER			1	SHAFT
		5	PISTON	52	50152	2	WASHER-3/4 X 1.5 X .03
		5	PISTON SPRING	53	45076	2	SEAL- .75 X 1.25 X .250
		5	PISTON SPRING WASHER				
14	2003005	1	ARM-TRUNNION	56	2003021	1	SHAFT-INPUT
15	9008000-0126	1	SEAL-LIP	57	50016	3	BOLT, 3/8-24 X 2.5
17	2000015	1	GUIDE-SLOT	58	44876	21	BOLT- 1/4-20 X 1.38
18	50449	1	SHAFT-MOTOR	59	50002	2	PIN- .5 OD X .43 ID X .750
19	50552	1	BEARING-THRUST 42X68X16	63	50156	1	SPACER
23	70082	1	BLOCK-CYLINDER (MOTOR) ASSY	65	44123	1	BOLT, 1/4-20 X 2.0
		1	BLOCK-CYLINDER	83	70132	1	JACK SHAFT/PINIION GEAR ASSEMBLY
		7	PISTON			1	23T GEAR
		7	PISTON SPRING			1	10T PINION
		7	PISTON SPRING WASHER			1	JACK SHAFT
24	45074	1	SEAL-LIP 10X25X7			2	CAPSCREW 6M X 20 LG
25	2003555	1	ACTUATOR-BYPASS			2	WASHER 7/16 X 1 X .5
26	70250	1	CENTERSECTION ASSEMBLY	85	50559	1	JACK SHAFT
		1	PLATE-BYPASS	88	50154	2	CAPSCREW 6M X 20 LG
		2	CHECK PLUG ASSEMBLY	89	50132	2	WASHER 7/16 X 1 X 5
		1	CENTER SECTION	90	50118	2	SLEEVE BEARING
		1	DU BEARING	91	50941	2	SEAL, LIP 0.75X1.00X0.158
		3	BOLT-3/8-24 X 2.5	92	2003014	1	SPRING, BLOCK
		1	BUSHING	93	2003017	1	WASHER, BLOCK THRUST
27	45075	1	SEAL-LIP 26X42X8	100	50400	1	CONTROL ARM
28	50007	1	RING-RETAINING	101	50140	1	SOCKET HEAD CAP SCREW
29	44872	2	WASHER-26X35X1	102	50141	1	NUT, 10-24
30	2003554	1	BYPASS PLATE	103	50142	1	SPACER
34	44964	1	OIL FILTER ELEMENT	134	44142	1	CASTLE NUT, 5/16-24
35	44866	1	ARM-BYPASS	135	44101	1	COTTER PIN
36	44870	1	RING-RETAINING	138	23770	1	SPACER
37	50131	1	ARM-ACTUATING	140	50269	1	NUT, HEX 5/16-24
38	44891	2	PIN-ACTUATING	141	50928	1	SEALANT
39	50316	1	BOLT-5/16-18 X 1-3/4	142		81oz	20W-50 OIL
41	70135	1	BRAKE ROTOR/STATOR KIT	150	70312	1	SEAL KIT
		4	STATOR-BRAKE	151	50416	1	GREASE
		2	ROTOR-BRAKE				

**Hydro-Gear**  
P 2 of 2 70196-S13