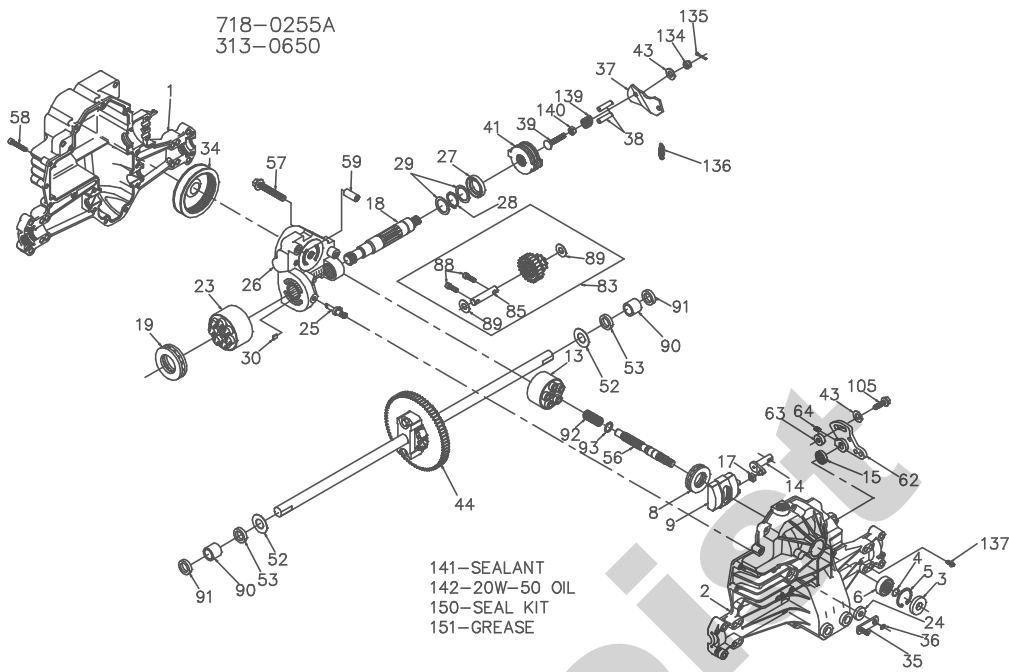


718-0255A
313-0650



Hydro-Gear
P.1 of 2. 70228-S11

718-0255A
313-0650

ITEM NO	HYDRO-GEAR PART NO	QTY	DESCRIPTION	ITEM NO	HYDRO-GEAR PART NO	QTY	DESCRIPTION
1	50074RM	1	HOUSING, LOWER	41	70135	1	BRAKE ROTOR/STATOR KIT
2	70255	1	ASSEMBLY, UPPER HOUSING	4		4	STATOR-BRAKE
3	9008000-0128	1	HOUSING, UPPER	2		2	ROTOR-BRAKE
4	2003016	1	BEARING-TRUNNION JOURNAL	43	44130	2	WASHER-7/16 X 7/8 X .060
5	2003052	1	SEAL-LIP	44	70228	1	DIFFERENTIAL ASSEMBLY
6	2003043	1	RING-WIRE RETAINING	1		1	GEAR-DIFF. 50T
7	2003052	1	RING-RETAINING	2		2	DIFF. HOUSING
8	2003043	1	BEARING-SHAFT BALL	2		2	GEAR-BEVEL 14T
9	50551	1	BEARING-THRUST 30X52X13	2		2	GEAR-PLANET 10T
13	2003087	1	SWASHPLATE-VARIABLE	2		2	RING-RETAINING
14	70331	1	BLOCK-CYLINDER ASS'Y.	2		2	BOLT- DIFF. LOCKING
15		1	BLOCK-CYLINDER	1		1	AXLE SHAFT, RH
16		5	PISTON	1		1	AXLE SHAFT, LH
17		5	PISTON SPRING	1		1	SPACER-DIFF.
18		5	PISTON SPRING WASHER	2	44875	2	WASHER-3/4 X 1.5 X .13
19	2003005	1	ARM-TRUNNION	53	45076	2	SEAL- .75 X 1.25 X .250
20	9008000-0126	1	SEAL-LIP	56	50005	1	SHAFT-INPUT
21	2000015	1	GUIDE-SLOT	57	50016	3	BOLT, 3/8-24 X 2.5
22	50449	1	SHAFT-MOTOR	58	44876	21	BOLT- 1/4-20 X 1.38
23	50552	1	BEARING-THRUST 42X68X16	59	50002	2	PIN- .5 OD X .43 ID X .750
24	70082	1	BLOCK-CYLINDER (MOTOR) ASSY	62	45007	1	ARM-CONTROL
25		1	BLOCK-CYLINDER	63	50034	1	FUCK-DAMPENER
26		7	PISTON	64	50018	1	SET SCREW
27		7	PISTON SPRING	83	70292	1	JACK SHAFT/PINION GEAR ASSEMBLY
28		7	PISTON SPRING WASHER	1		1	JACK SHAFT
29	45074	1	SEAL-LIP 10X25X7	1		1	17T-23T CLUSTER ASSEMBLY
30	2003555	1	ACTUATOR-BYPASS	2		2	CAPSCREW 6M X 20 LG
31	70250	1	CENTERSECTION ASSEMBLY	2		2	WASHER 7/16 X 1 X .5
32		1	PLATE-BYPASS	85	50559	1	JACK SHAFT
33		2	CHECK PLUG ASSEMBLY	88	50184	2	CAPSCREW 6M X 20 LG
34		1	CENTER SECTION	88	50132	2	WASHER 7/16 X 1 X .5
35		1	DU BEARING	90	50118	2	SLEEVE BEARING
36		1	BOLT-3/8-24 X 2.5	91	50941	2	SEAL, LIP 0.75X1.00X0.158
37		1	BUSHING	92	2003014	1	SPRING, BLOCK
38	45075	1	SEAL-LIP 26X42X8	93	2003017	1	WASHER, BLOCK THRUST
39	50007	1	RING-RETAINING	105	50282	1	FLANGE HEAD SCREW, 5/16-24 X 1
40	44872	2	WASHER-26X35X1	134	44142	1	CASTLE NUT, 5/16-24
41	2003554	1	BYPASS PLATE	135	44101	1	COTTER PIN
42	44964	1	OIL FILTER ELEMENT	136	50384	1	EXTENSION SPRING
43	50126	1	ARM-BYPASS	137	50653	1	SCREW, 10-32 X 1/2
44	44870	1	RING-RETAINING	139	50431	1	COMPRESSION SPRING
45	50130	1	ARM-ACTUATING	140	50289	1	NUT, HEX 5/16-24
46	44891	2	PIN-ACTUATING	141	50928	1	SEALANT
47	50316	1	BOLT-5/16-18 X 1-3/4	142		81oz	20W-50 OIL
				150	70312	1	SEAL KIT
				151	50416	1	GREASE

Hydro-Gear
P.2 of 2. 70228-S11