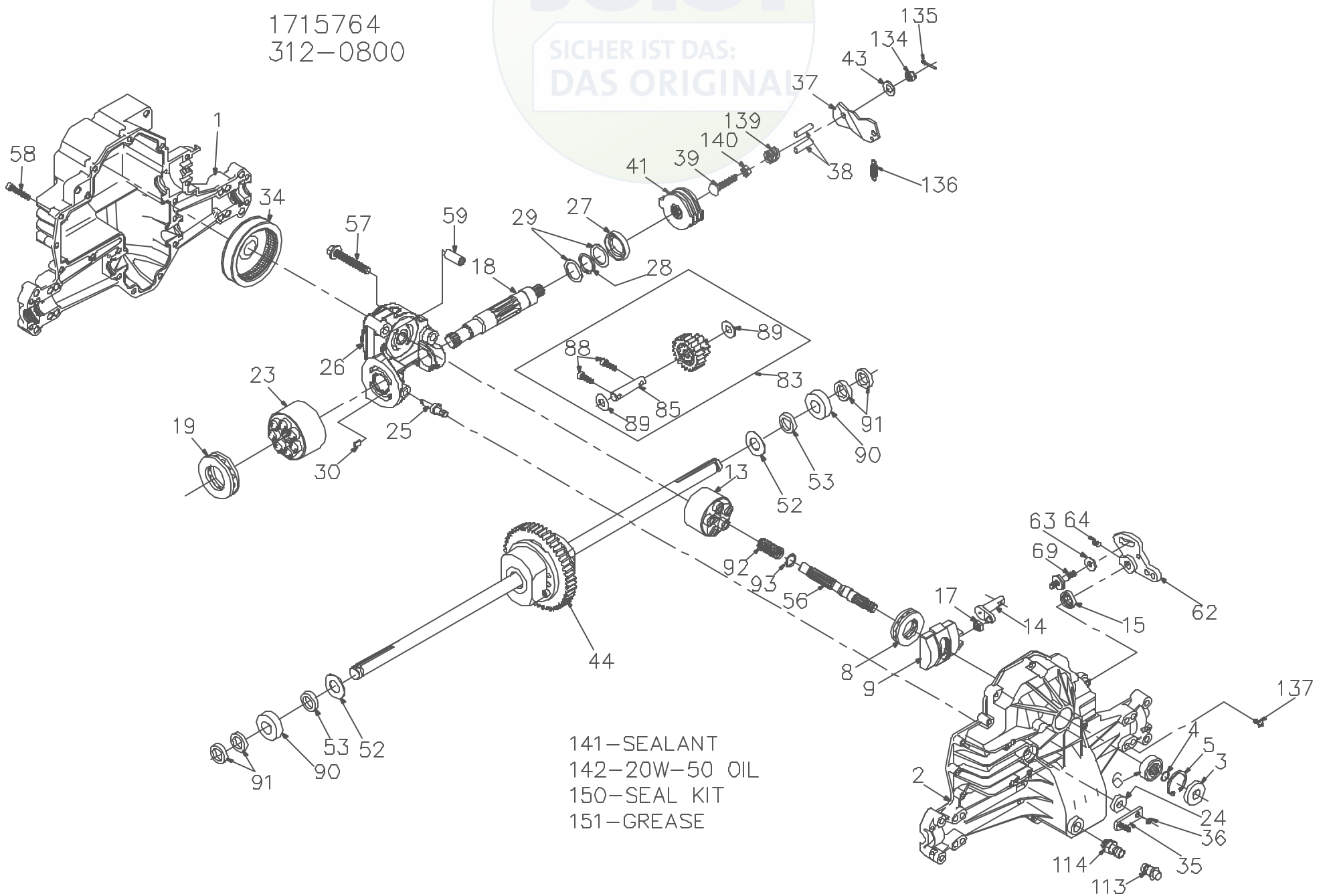




1715764  
312-0800



141-SEALANT  
142-20W-50 OIL  
150-SEAL KIT  
151-GREASE



P.1 of 2. 70262-S6

1715764  
312-0800

| ITEM NO | HYDRO-GEAR PART NO | QTY | DESCRIPTION                 |
|---------|--------------------|-----|-----------------------------|
| 1       | 50074RM            | 1   | HOUSING, LOWER              |
| 2       | 70255              | 1   | ASSEMBLY, UPPER HOUSING     |
|         |                    | 1   | HOUSING, UPPER              |
|         |                    | 1   | BEARING-TRUNNION JOURNAL    |
| 3       | 9008000-012B       | 1   | SEAL-LIP                    |
| 4       | 2003016            | 1   | RING-WIRE RETAINING         |
| 5       | 2003052            | 1   | RING-RETAINING              |
| 6       | 2003043            | 1   | BEARING-SHAFT BALL          |
| 8       | 50551              | 1   | BEARING-THRUST 30X52X13     |
| 9       | 2003087            | 1   | SWASHPLATE-VARIABLE         |
| 13      | 70331              | 1   | BLOCK-CYLINDER ASS'Y        |
|         |                    | 1   | BLOCK-CYLINDER              |
|         |                    | 5   | PISTON                      |
|         |                    | 5   | PISTON SPRING               |
|         |                    | 5   | PISTON SPRING WASHER        |
| 14      | 2003005            | 1   | ARM-TRUNNION                |
| 15      | 9008000-012B       | 1   | SEAL-LIP                    |
| 17      | 2000015            | 1   | GUIDE-SLOT                  |
| 18      | 50449              | 1   | SHAFT-MOTOR                 |
| 19      | 50552              | 1   | BEARING-THRUST 42X68X16     |
| 23      | 70082              | 1   | BLOCK-CYLINDER (MOTOR) ASSY |
|         |                    | 1   | BLOCK-CYLINDER              |
|         |                    | 7   | PISTON                      |
|         |                    | 7   | PISTON SPRING               |
|         |                    | 7   | PISTON SPRING WASHER        |
| 24      | 45074              | 1   | SEAL-LIP 10X25X7            |
| 25      | 2003555            | 1   | ACTUATOR-BYPASS             |
| 26      | 70250              | 1   | CENTERSECTION ASSEMBLY      |
|         |                    | 1   | PLATE-BYPASS                |
|         |                    | 1   | CHECK PLUG ASSEMBLY         |
|         |                    | 1   | CENTER SECTION              |
|         |                    | 2   | DU BEARING                  |
|         |                    | 3   | BOLT-3/8-24 X 2.5           |
|         |                    | 1   | BUSHING                     |
| 27      | 45075              | 1   | SEAL-LIP 26X42X8            |
| 28      | 50007              | 1   | RING-RETAINING              |
| 29      | 44872              | 2   | WASHER-26X35X1              |
| 30      | 2003554            | 1   | BYPASS PLATE                |
| 34      | 44964              | 1   | OIL FILTER ELEMENT          |
| 35      | 50126              | 1   | ARM-BYPASS                  |
| 36      | 44870              | 1   | RING-RETAINING              |
| 37      | 50130              | 1   | ARM-ACTUATING               |
| 38      | 44891              | 2   | PIN-ACTUATING               |
| 39      | 50316              | 1   | BOLT-5/16-18 X 1-3/4        |
| 41      | 70135              | 1   | BRAKE ROTOR/STATOR KIT      |
|         |                    | 4   | STATOR-BRAKE                |
|         |                    | 2   | ROTOR-BRAKE                 |

| ITEM NO | HYDRO-GEAR PART NO | QTY  | DESCRIPTION                     |
|---------|--------------------|------|---------------------------------|
| 43      | 44130              | 1    | WASHER-7/16 X 7/8 X .060        |
| 44      | 70258              | 1    | DIFFERENTIAL ASSEMBLY           |
|         |                    | 1    | GEAR-DIFF. 50T                  |
|         |                    | 2    | DIFF. COVER                     |
|         |                    | 2    | GEAR-BEVEL 15T                  |
|         |                    | 2    | GEAR-PLANET 15T                 |
|         |                    | 2    | JAM NUT                         |
|         |                    | 4    | BOLT- 1/4-20 X 1.38             |
|         |                    | 1    | AXLE SHAFT, RH                  |
|         |                    | 1    | AXLE SHAFT, LH                  |
|         |                    | 2    | BEARING, BLOCK                  |
|         |                    | 1    | SHAFT                           |
|         |                    | 1    | HEX NUT                         |
|         |                    | 6    | SPRING WASHER                   |
|         |                    | 1    | SOCKET HEAD CAP SCREW           |
| 52      | 50152              | 2    | WASHER-3/4 X 1 5 X .03          |
| 53      | 45076              | 2    | SEAL- .75 X 1.25 X .250         |
| 56      | 50005              | 1    | SHAFT-INPUT                     |
| 57      | 50016              | 1    | BOLT, 3/8-24 X 2 5              |
| 58      | 44876              | 21   | BOLT- 1/4-20 X 1.38             |
| 59      | 50002              | 2    | PIN- .5 OD X .43 ID X .750      |
| 62      | 45007              | 1    | ARM-CONTROL                     |
| 63      | 50281              | 1    | FUCK-DAMPENER                   |
| 64      | 50018              | 1    | SET SCREW                       |
| 69      | 50426              | 1    | 5/16-24 STUD                    |
| 83      | 70132              | 1    | JACK SHAFT/PINION GEAR ASSEMBLY |
|         |                    | 1    | 23T GEAR                        |
|         |                    | 1    | 10T PINION                      |
|         |                    | 1    | JACK SHAFT                      |
|         |                    | 2    | CAPSCREW 6M X 20 LG             |
|         |                    | 2    | WASHER 7/16 X 1 X .5            |
| 85      | 50559              | 1    | JACK SHAFT                      |
| 88      | 50154              | 2    | CAPSCREW 6M X 20 LG             |
| 89      | 50132              | 2    | WASHER 7/16 X 1 X .5            |
| 90      | 44121              | 2    | BALL BEARING                    |
| 91      | 50941              | 4    | SEAL, LIP .75 X 1.00 X 15B      |
| 92      | 2003014            | 1    | SPRING, BLOCK                   |
| 93      | 2003017            | 1    | WASHER, BLOCK THRUST            |
| 113     | 70109              | 1    | CAP-VENT ASSEMBLY               |
|         |                    | 1    | CAP-POPPET VALVE                |
|         |                    | 1    | PLASTIC VENT                    |
| 114     | 70110              | 1    | FITTING-O RING ASSEMBLY         |
|         |                    | 1    | O-RING                          |
|         |                    | 1    | PLASTIC HOSE FITTING            |
| 134     | 44142              | 1    | CASTLE NUT, 5/16-24             |
| 135     | 44101              | 1    | COTTER PIN                      |
| 136     | 50384              | 1    | EXTENSION SPRING                |
| 137     | 50653              | 1    | SCREW, 10-32 X 1/2              |
| 139     | 50431              | 1    | COMPRESSION SPRING              |
| 140     | 50269              | 1    | NUT, HEX 5/16-24                |
| 141     | 50928              | 1    | SEALANT                         |
| 142     |                    | 79oz | 20W-50 OIL                      |
| 150     | 70312              | 1    | SEAL KIT                        |
| 151     | 50416              | 1    | GREASE                          |



P 2 of 2 70262-S6